

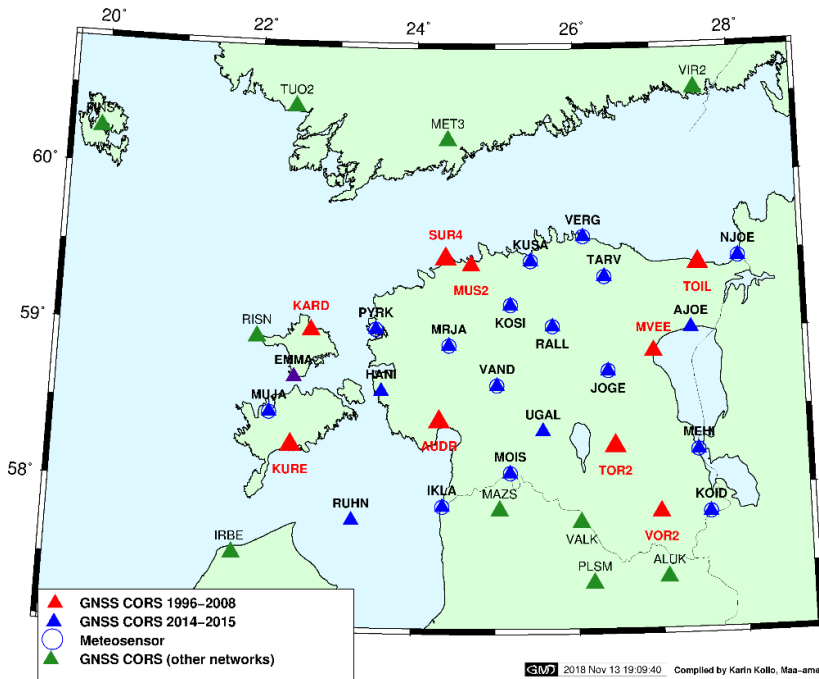


MAA-AMET

National Report of Estonia

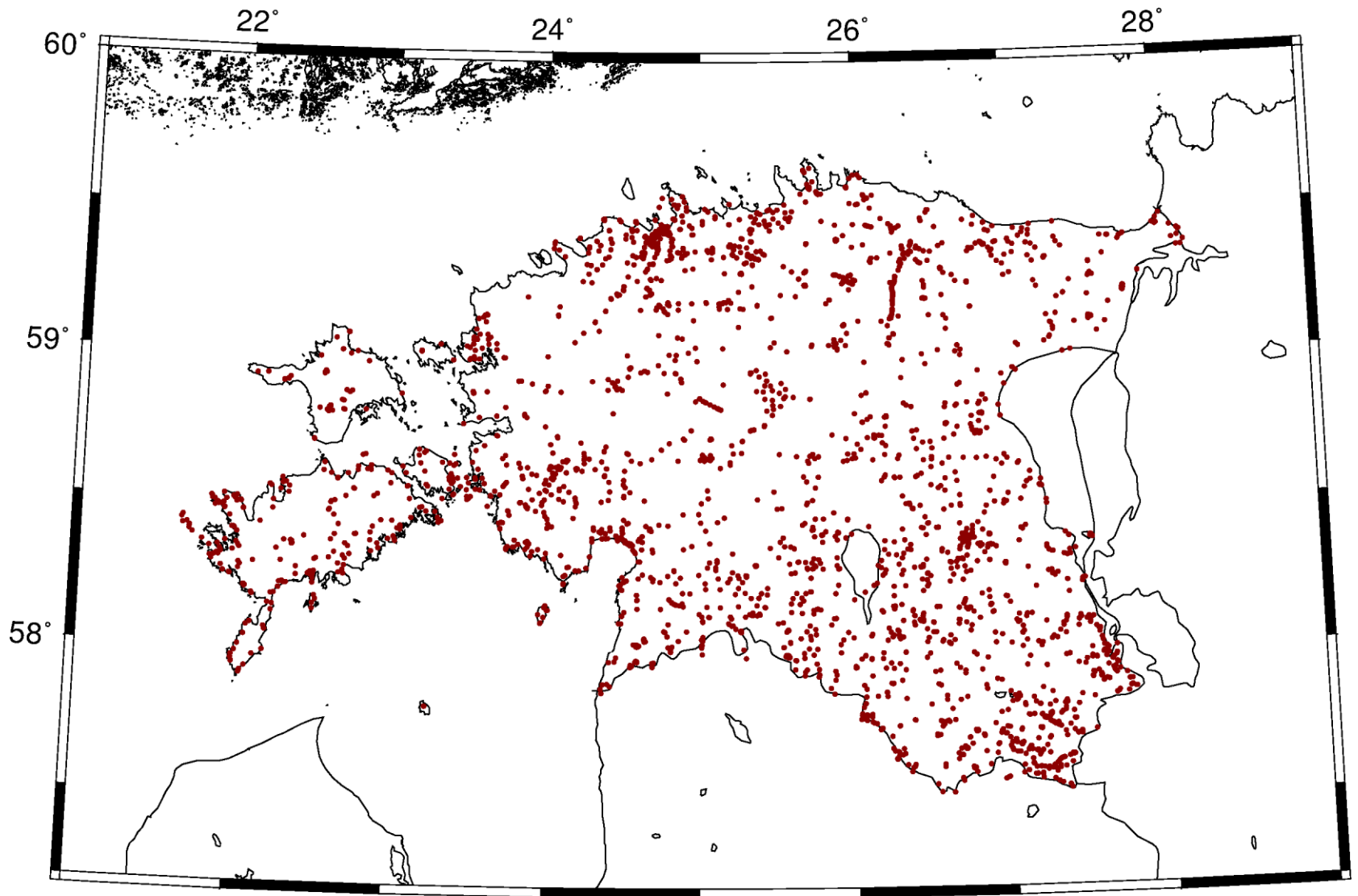
Jaanus Metsar, Karin Kollo

ESTPOS

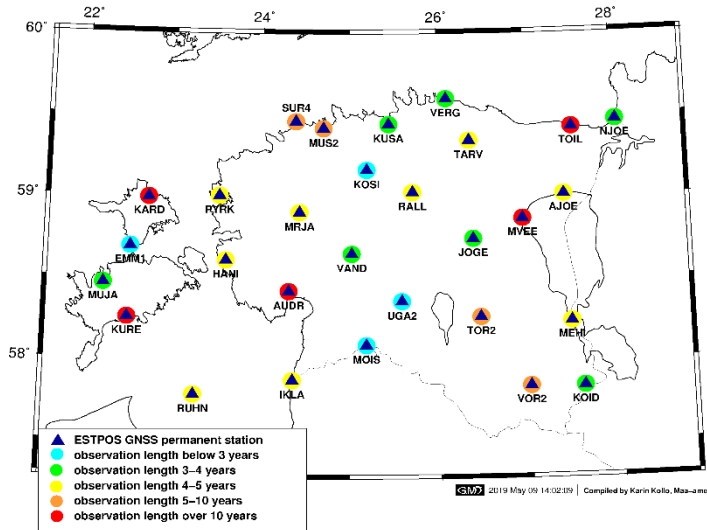


- 29 stations
- GPS+GLO+GAL
- All the stations have same equipment (e.g. Leica)
- 14 stations with meteosensors
- Not for commercial use. Free for state institutions, universities, etc.
- RTK streams available (GPS+GLO+GAL since october 2019)

ESTPOS



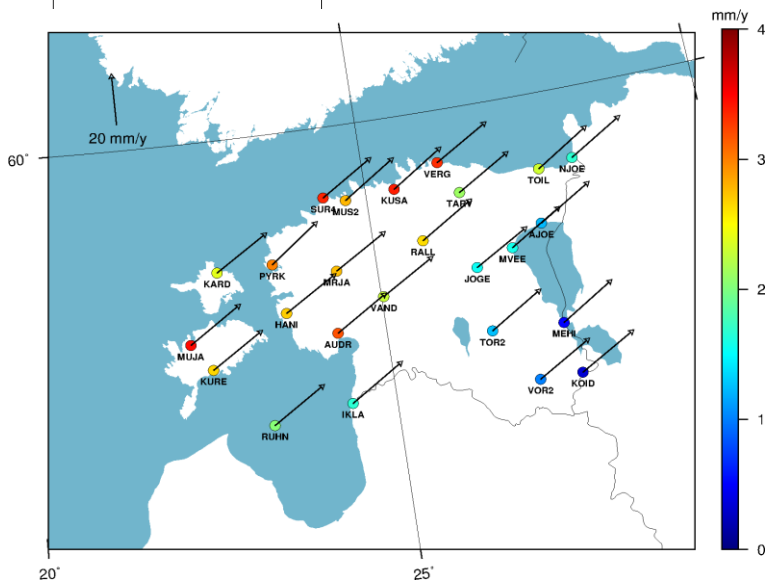
EUREF densification



- Multi-year solution based on weekly SINEX
- Compiled with CATREF
- Total time span from GPS week 1408-2034

- Final coordinates and velocities at epoch 2013.00 in IGS14 and ETRF89

- Accepted by EUREF GB at the EUREF2019 symposium in Tallinn



EPOS

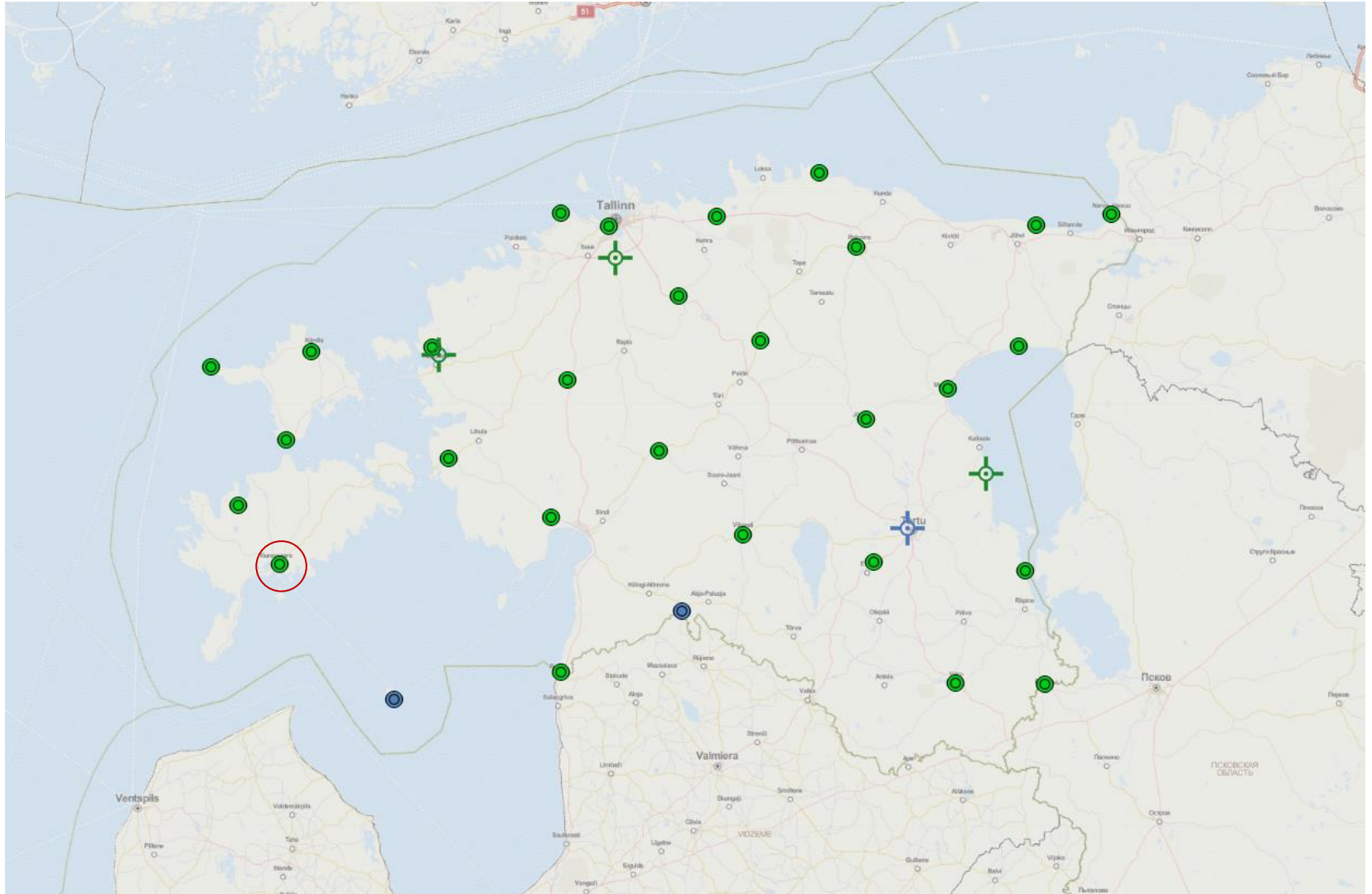
- 9 stations
 - SUR400EST, TOIL00EST, TOR2EST, KURE00EST
 - KARD00EST, IKLA00EST, RALL00EST, AUDR00EST, VOR200EST

Inspection of geodetic marks

- Maintenance works continue in southern Estonia and on the islands for geodetic points from I and II order National Geodetic Network



Interference



- 2019-09-29 21:22:58 Complete loss of lock
- 2019-09-29 21:24:01 Complete loss of lock
- 2019-09-29 21:24:14 Complete loss of lock
- 2019-09-29 21:24:52 Navigated position lost.
- 2019-09-29 21:24:53 Navigated position available.
- 2019-09-29 21:24:59 Navigated position lost.
- 2019-09-29 21:25:00 Navigated position available.
- 2019-09-29 21:25:32 Navigated position lost.
- 2019-09-29 21:26:59 Current position is not available
- 2019-09-29 21:34:17 Navigated position available.



<https://gnssinterference2019.com/program/>



MAA-AMET

Thank you!

Jaanus Metsar
jaanus.metsar@maaamet.ee