

EUPOS-RIGA



**RĪGAS PILSĒTAS
PAŠVALDĪBA**

Riga City Council
City Development Department



System description

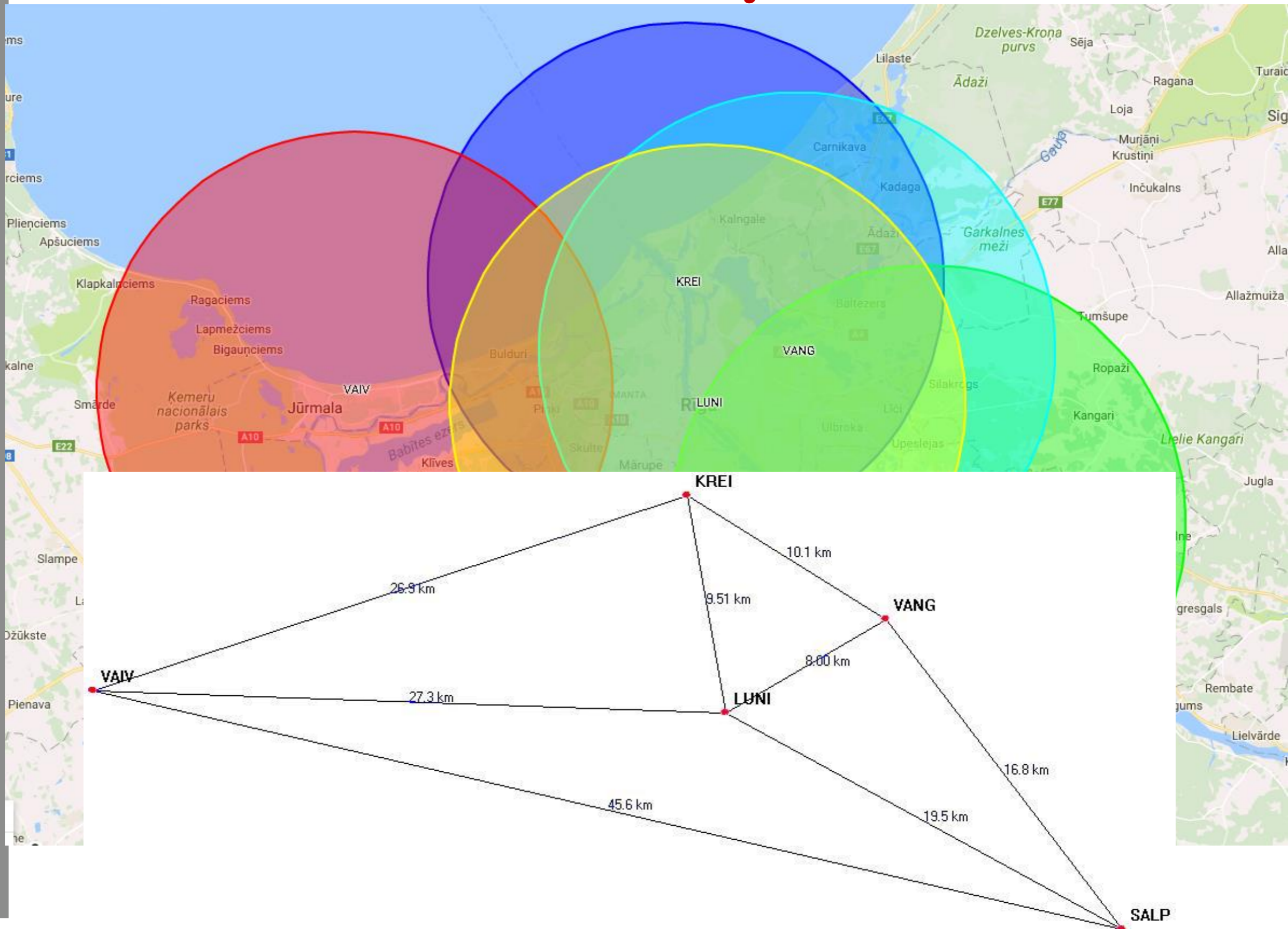
- **Software:** _____ **GEO++ GNSMART 1.x**
- **Server solution:** _____ **Virtual Windows server**
- **Supported GNSS:** _____ **GPS + Glonass**
- **Data output solutions:** _____ **VRS, FKP, RINEX**
- **Receivers:** _____ **(4)Javad Prego, (1)Topcon NET G-5**
- **Service cost:** _____ **Free of charge**

RTK users

- **Total number of users:** _____ **57**
- **Users from Riga City municipality:** _____ **6**
- **Surveyors:** _____ **46**
- **Universities:** _____ **3**
- **Other users:** _____ **2**



EUPOS-RIGA network today



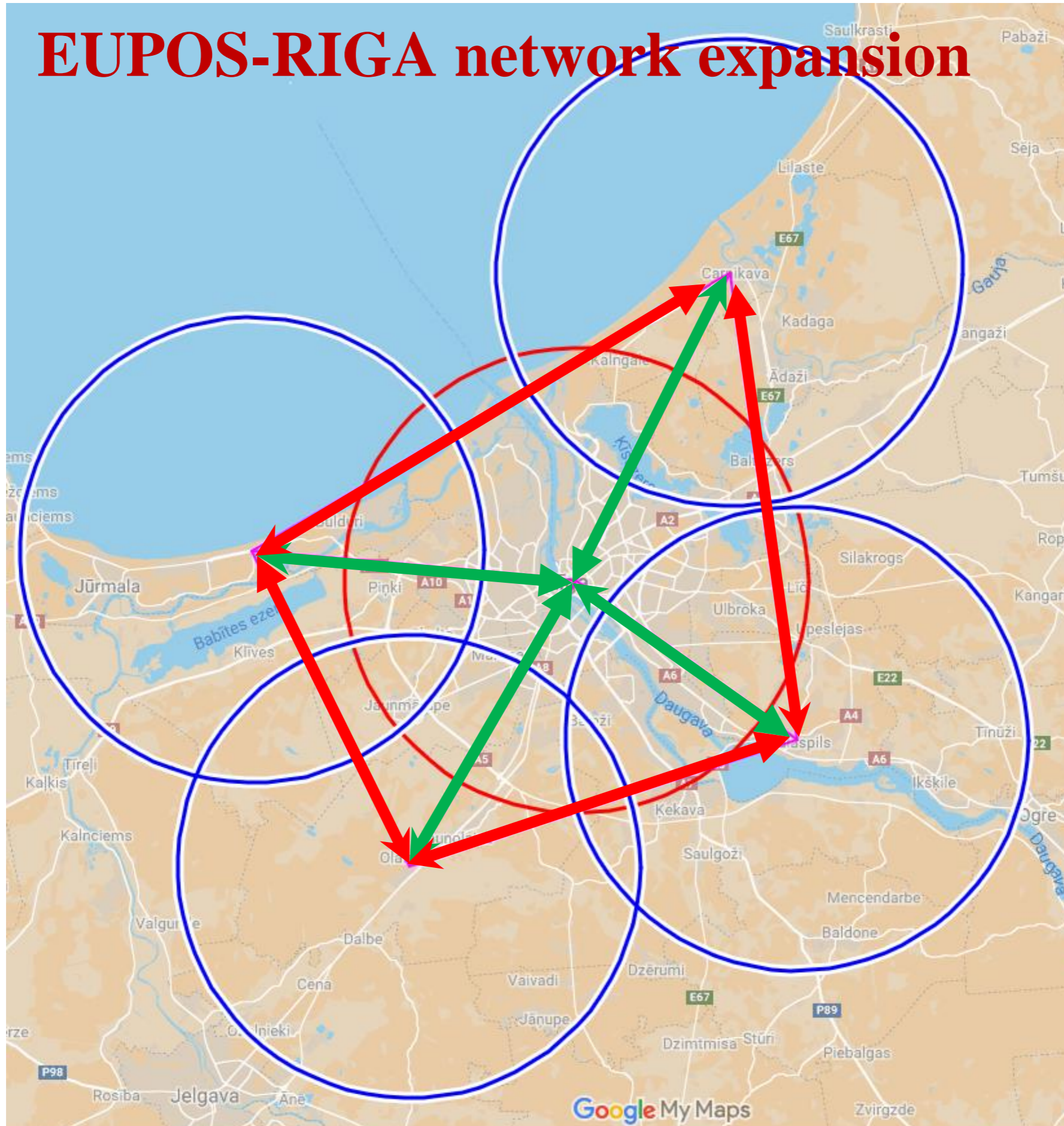


Developments plans for EUPOS-RIGA and Riga City

- **EUPOS-RIGA software upgrade to GNSMART 2.0**
 - Implication of Galileo;
 - Possible implication of Beidou.
- **Expansion of EUPOS-RIGA network coverage area**
 - Search for new reference station mounting location;
 - Optimising network geometry;
 - Increasing the use of RTK services on outskirts of Riga City.
- **Upgrade of Riga City quazi-geoid model**
 - Solution for insufficient geoid model LV'14;
 - Partial solution for City's insufficient level benchmark network.



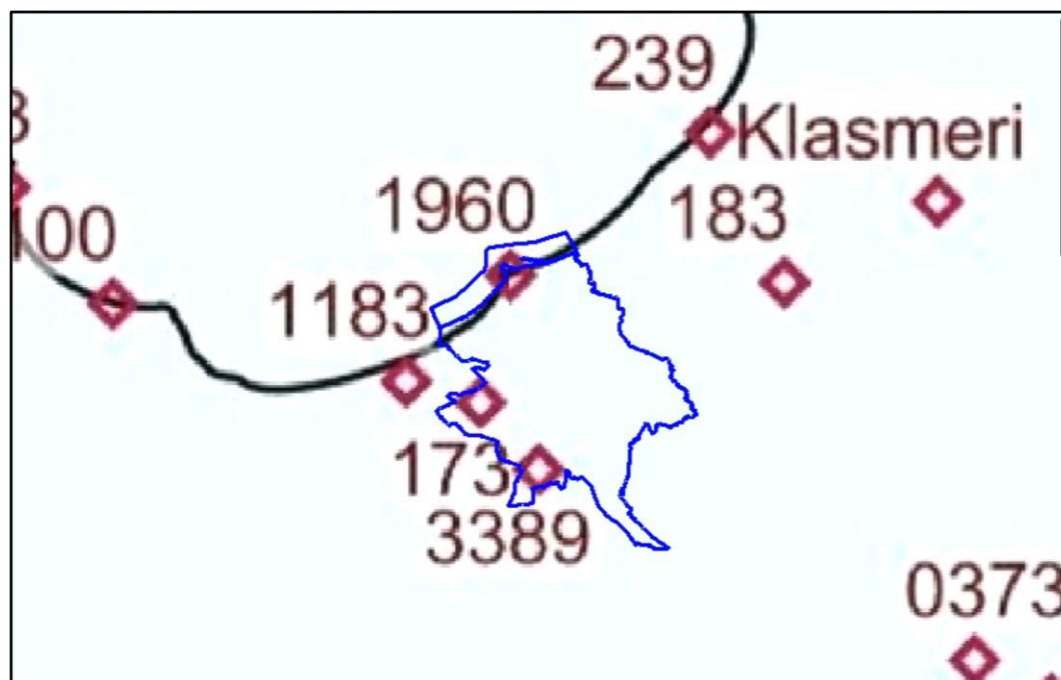
EUPOS-RIGA network expansion



- **Radius 15km;**
- **Outer stations - 17 to 22km from center station;**
- **Distance between outer stations - 22 to 30km**



Riga City quasi-geoid model upgrade



4 ground points

40 ground points

